



■ Features:

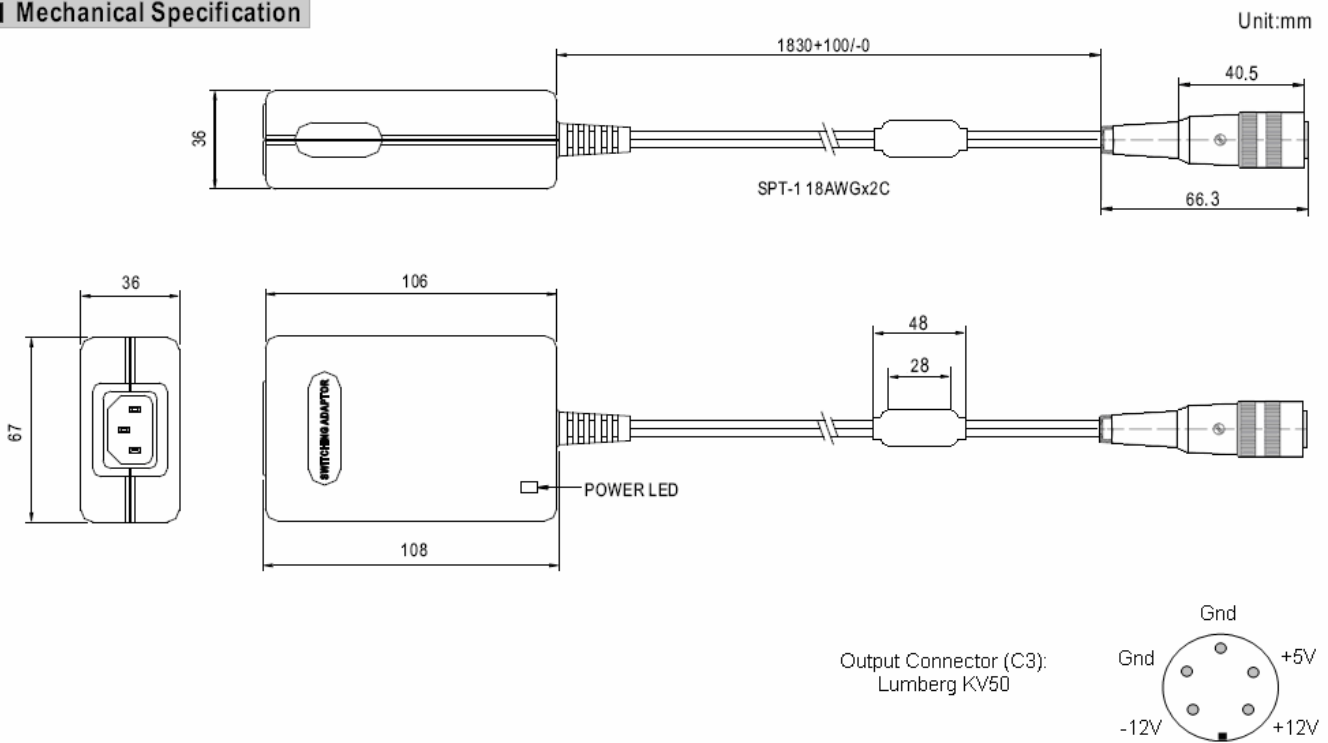
- 3 pole AC inlet IEC320-C14
- Class I power (with earth pin)
- Protections: Short circuit/ Over load/ Over voltage/ Over temp.
- Fix switching frequency and regulation
- 100% full load burn-in test
- LED indicator for power on
- Fully enclosed plastic case
- Topology: Top switch circuit
- Approvals: UL/ CUL/ TUV/ CB/ CE
- 1 year warranty



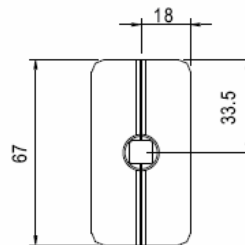
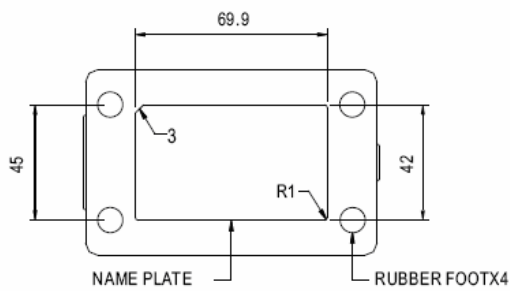
SPECIFICATIONS

OUTPUT	DC VOLTAGE	Note 2.	5V	12V	-12V
	RATED CURRENT		2.5A	0.8A	0.3A
	CURRENT RANGE		0.5 ~ 2.5A	0.1 ~ 0.8A	0.1 ~ 0.3A
	RATED POWER			25W	
	RIPPLE&NOISE (max)	Note 3.	50mV _{p-p}	100mV _{p-p}	100mV _{p-p}
	VOLTAGE ADJ. RANGE			Fixed	
	VOLTAGE TOLERANCE	Note 4.	± 5.0%	± 5.0%	± 5.0%
	LINE REGULATION	Note 5.	± 1.0%	± 1.0%	± 1.0%
	LOAD REGULATION	Note 6.	± 5.0%	± 5.0%	± 5.0%
SETUP, RISE, HOLD TIME			200ms, 50ms, 16ms at full load		
INPUT	VOLTAGE RANGE		90 ~ 264VAC		
	FREQUENCY RANGE		47 ~ 63 Hz		
	EFFICIENCY (Typ.)		72%		
	AC CURRENT		0.8A / 100VAC		
	INRUSH CURRENT (max.)		COLD START < 60A PEAK @ 230VAC		
	LEAKAGE CURRENT (max.)		0.75 mA / 240 VAC		
PROTECTION	OVER LOAD		150 ~ 250% rated output power Protection type: Hiccup mode, recovers automatically after fault condition is removed		
	OVER VOLTAGE		110 ~ 140% rated output voltage Protection type: Shut down o /p voltage, re-power on to recover		
ENVIRONMENT	WORKING TEMP.		0 ~ +40°C (Refer to output load derating curve)		
	WORKING HUMIDITY		20% ~ 90% RH non-condensing		
	STORAGE TEMP., HUMIDITY		-20 ~ +85°C, 10 ~ 95% RH		
	TEMP. COEFFICIENT		± 0.03 %/°C (0 ~ 50°C)		
	VIBRATION		10 ~ 500 Hz, 2G 10min./1cycle, period for 60 min. each along X, Y, Z axes		
SAFETY & EMC (Note 7.)	SAFETY STANDARDS		UL1950, CSA22.2, EN60950 Approved		
	WITHSTAND VOLTAGE		I/P – O/P; 3KVAC, I/P – FG : 1.5KVAC FOR 1min.		
	ISOLATION RESISTANCE		I/P – O/P, I/P – FG : 100 MOhms / 500VDC		
	EMI CONDUCTION & RADIATION		Compliance to EN 55022 (CISPR22) class B		
	HARMONIC CURRENT		Compliance to EN61000 – 3 – 2,3 class A		
	EMS IMMUNITY		Compliance to EN61000 – 4 – 2,3,4,5,6,11, Light industry level, criteria A		
OTHERS	MTBF		200000 hrs BY MIL – HDBK – 217F (25°C)		
	DIMENSION		108 * 67 * 36 mm (L * W * H)		
	WEIGHT		0.3 kg		
CONNECTOR	PLUG OF DC OUTPUT		KV50 : SOCKET , DIN STRAIGHT 5 WAY ; IEC 60130-9, IP 40		
	LENGTH OF OUTPUT CABLE		150cm OF AWM 2464X4C, WITH SHIELDING (TYPICAL)		
NOTE	<ol style="list-style-type: none"> 1. All parameters are specified at 230VAC input, rated load, 25°C, 70% RH Ambient. 2. DC voltage : The output voltage set at point measure by plug terminal & 50% load. 3. Ripple & noise are measured at 20 MHz by using a 12" twisted pair terminated with a 0.1 μF & 47 μF capacitor. 4. Tolerance : includes set up tolerance, line regulation, load regulation. 5. Load regulation is measured from low line to high line at rated load. 6. Load regulation is measured from 20% to 100% rated. 7. The power supply is considered a component which will be installed into a final equipment. The final equipment must be re-confirmed that is still meets EMC directives. 				

Mechanical Specification



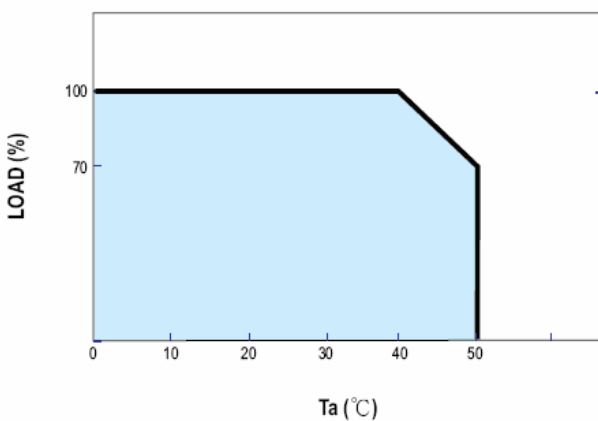
Plug Assignment



Standard plug: P2J (option)

P2J	
P/N	OUTPUT
CENTER	+

Derating Curve



Static Characteristics

