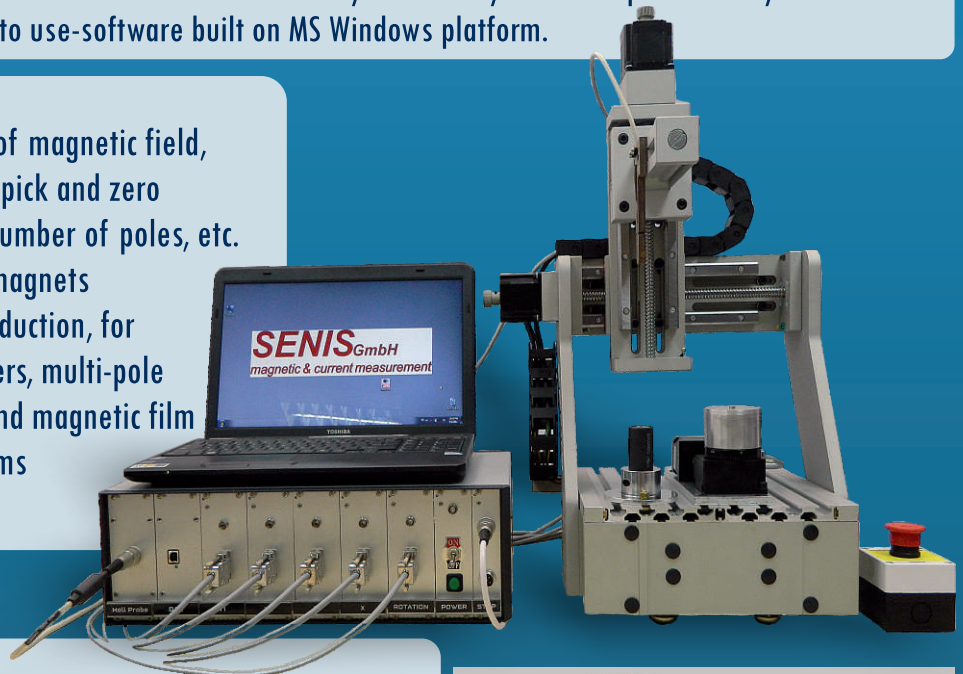


# Magnetic Field Mapping System MMS-1-R

Magnetic Field Mapping System MMS-1-R allows a user to do a high resolution mapping of the magnetic field around an electromagnet or permanent magnet. The map of the magnetic field may be given in the form of color coded 2D or 3D isometric visual display on PC screen, tables of the numerical values of the three components, the total magnetic field, and so on. Due to the unique features of the applied integrated Hall probe, all three components of the magnetic field are measured simultaneously at virtually the same point. The system is controlled by an extremely easy-to use software built on MS Windows platform.

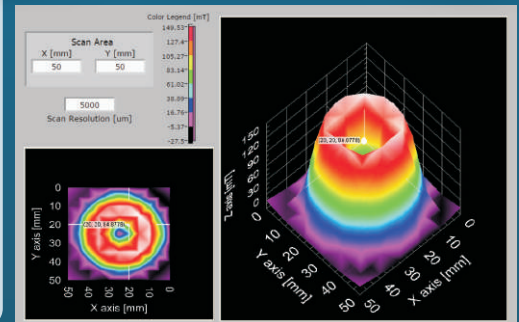
## TYPICAL APPLICATIONS:

- Measurement of all three axes of magnetic field, magnetic angle measurement, pick and zero value detection, counting the number of poles, etc.
- Quality control of permanent magnets
- Quality assessment tool in production, for assemblies such as loudspeakers, multi-pole magnets, photocopier rollers and magnetic film
- Development of magnet systems
- AC magnetic field mapping



## FEATURES:

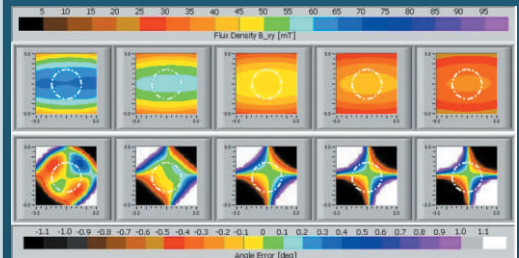
- Scanning Volume (X x Y x Z): 100 x 100 x 100 mm<sup>3</sup> (standard)
- Scanning spatial resolution: down to 10 μm
- Rotation stage for the magnet under test (optional)
- 3-Axis integrated Hall probe with the spatial resolution of 0.1mm
- High accuracy of the magnetic field measurement (better than 0.1%)
- DC and AC field measurements from DC to 2.5 kHz (-3dB point)



## SOFTWARE:

The software, based on LabVIEW on MS Windows platform, offers the following options:

- Automatic color coding of magnetic field with appropriate legend
- User defined scanning area and resolution
- Zoom and rotate 3D image
- Movable cursor displaying X and Y coordinate and magnetic flux density value
- Probe returns to the start measuring point after the full scan is performed



## SENIS GmbH

Technoparkstrasse 1 • CH-8005 Zürich • Switzerland  
Phone: +41 44 508 7029 • Fax: +41 43 205 2638  
E-mail: [transducers@senis.ch](mailto:transducers@senis.ch) • Web: [www.senis.ch](http://www.senis.ch)

## North America Distributor: *GMW Associates*

955 Industrial Road • San Carlos • CA 94070 • USA  
Web: [www.gmw.com](http://www.gmw.com) • Email: [sales@gmw.com](mailto:sales@gmw.com)  
Phone: +1 (650)802 8292 • Fax: +1(650)802 8298